

Estd. 1989

SIR C. R. REDDY COLLEGE OF ENGINEERING

ELURU534007, Eluru Dist., A.P., INDIA

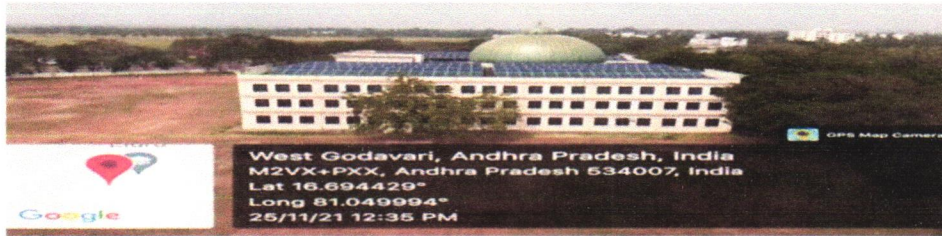
ACCREDITED BY NBA, APPROVED BY ALL INDIA COUNCIL FOR TECHNICAL EDUCATION, NEW DELHI,
PERMANENTLY AFFILIATED TO JNTUK, KAKINADA

www.sircrrengg.ac.in

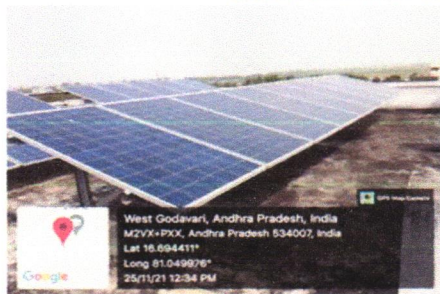


OFF: (08812) 230840, 230565
FAX : (08812) 224193
Email: principal.sircrrengg@gmail.com

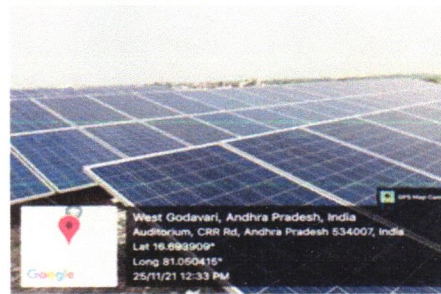
SOLAR PARK DETAILS



SOLAR PLANT ON CENTRAL LIBRARY




SOLAR PANELS ON FED DEPARTMENT




SOLAR PLANT ON IT DEPARTMENT

Energy is a critical component of a country's economic and environmental development. The use of renewable energy sources can reduce greenhouse gas emissions and help mitigate the effects of climate change. To contribute to the reduction of greenhouse gas emissions and protect our environment, the management of Sir C R Reddy College of Engineering has established a solar power plant in three different locations within the college premises, with a total capacity of **250 kWp**.

S.No	Location	Capacity
1	Central Library	110 kWp
2	FED Block	70 kWp
3	IT Department	70 kWp


IQAC Coordinator




PRINCIPAL
Principal
Sir C R Reddy College of Engineering
ELURU - 534 007

Estd. 1989

SIR C. R. REDDY COLLEGE OF ENGINEERING

ELURU534007, Eluru Dist., A.P., INDIA

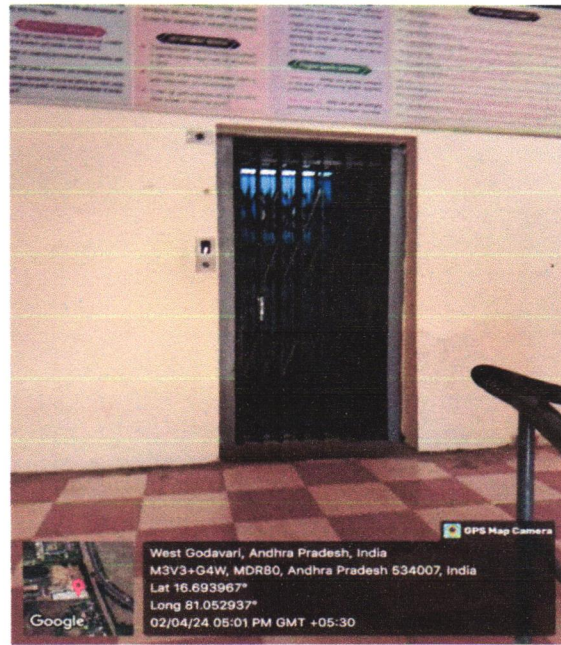
ACCREDITED BY NBA, APPROVED BY ALL INDIA COUNCIL FOR TECHNICAL EDUCATION, NEW DELHI,
PERMANENTLY AFFILIATED TO JNTUK, KAKINADA

www.sircrrengg.ac.in



OFF: (08812) 230840, 230565
FAX : (08812) 224193
Email: principal.sircrrengg@gmail.com

LIFT FACILITY



S.No	Location	Capacity
1	FED Block	884kg
2	IT Department	426kg

There are two locations where we have elevator facilities at Sir C.R. Reddy College of Engineering. The FED department has an elevator facility with a capacity of 884 kg, while the IT department has a facility with a capacity of 426 kg.


IQAC Coordinator




PRINCIPAL
Principal
Sir C R Reddy College of Engineering
ELURU - 534 007

Estd. 1989

SIR C. R. REDDY COLLEGE OF ENGINEERING

ELURU534007, Eluru Dist., A.P., INDIA

ACCREDITED BY NBA, APPROVED BY ALL INDIA COUNCIL FOR TECHNICAL EDUCATION, NEW DELHI,
PERMANENTLY AFFILIATED TO JNTUK, KAKINADA

www.sircrrengg.ac.in



OFF: (08812) 230840, 230565
FAX : (08812) 224193
Email: principal.sircrrengg@gmail.com


BOREWELLS



Sir C R Reddy College of Engineering is nestled in a region brimming with groundwater, thanks to consistent and well-distributed rainfall. This abundance is further enhanced by the implementation of practices such as Rain Water Harvesting Systems and Open Ponds within the campus, ensuring the continual percolation of groundwater. To meet its water requirements, the institution relies on three bore wells within the campus. Moreover, recognizing the importance of maintaining a sustainable balance, the college has instituted a comprehensive groundwater recharge system. Through these initiatives, the institution not only fulfills its water needs but also contributes to the preservation of this invaluable resource.


IQAC Coordinator




PRINCIPAL
Principal
Sir C R Reddy College of Engineering
ELURU - 534 007

Estd. 1989

SIR C. R. REDDY COLLEGE OF ENGINEERING

ELURU534007, Eluru Dist., A.P., INDIA

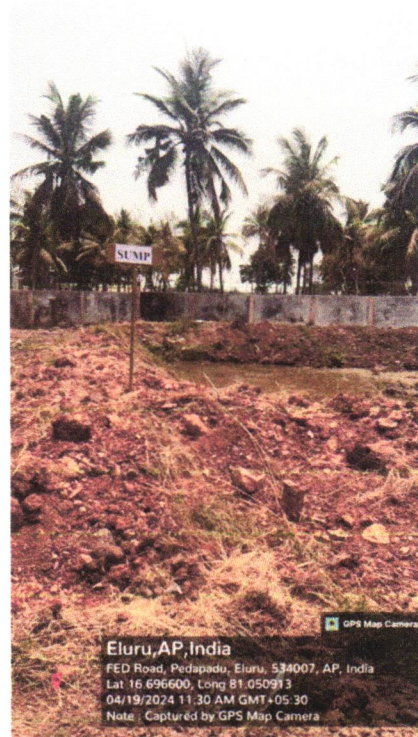
ACCREDITED BY NBA, APPROVED BY ALL INDIA COUNCIL FOR TECHNICAL EDUCATION, NEW DELHI,
PERMANENTLY AFFILIATED TO JNTUK, KAKINADA

www.sircrreng.ac.in



OFF: (08812) 230840, 230565
FAX : (08812) 224193
Email: principal.sircrreng@gmail.com


SUMP



A sump/pond has been excavated within the premises of Sir C R Reddy College of Engineering, serving as a pivotal element in water management, flood control, water conservation, groundwater recharge, and environmental sustainability efforts. The well-established drain network efficiently channels excess rainwater and wastewater from RO Water Plants to the pond. This integrated system provides a practical solution to tackle water-related challenges while fostering resilience and sustainability in campus infrastructure.


IQAC Coordinator




PRINCIPAL
Principal
Sir C R Reddy College of Engineering
ELURU - 534 007

Estd. 1989

SIR C. R. REDDY COLLEGE OF ENGINEERING

ELURU534007, Eluru Dist., A.P., INDIA

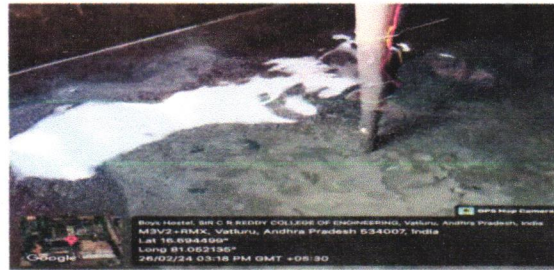
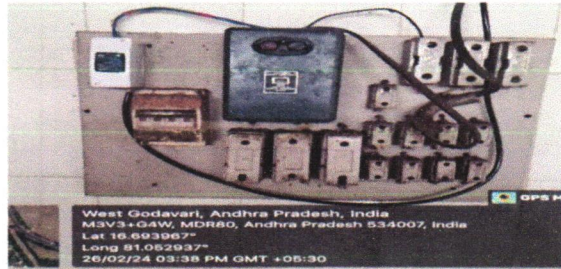
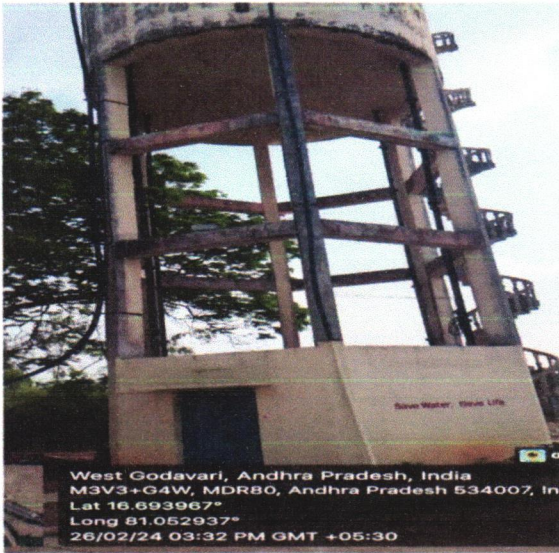
ACCREDITED BY NBA, APPROVED BY ALL INDIA COUNCIL FOR TECHNICAL EDUCATION, NEW DELHI,
PERMANENTLY AFFILIATED TO JNTUK, KAKINADA

www.sircrrengg.ac.in



OFF: (08812) 230840, 230565
FAX : (08812) 224193
Email: principal.sircrrengg@gmail.com

WATER TANK FACILITY WITH SENSOR OPERATED MOTORS



S.No	Location	Capacity (ltr)
1	College main tank	120000
2	Boys hostel	40000
3	Girls hostel	40000(20000*2)

Sir C.R. Reddy College of Engineering Campus has an excellent water storage tank facility with a capacity of over two lakh liters, distributed across three areas on the campus. To conserve water, the tanks are equipped with sensor-operated motors to manage water overflow. Adjacent to the IT department, there is a primary tank with a capacity of 1,20,000 liters. Additionally, there are two water tanks, each with a capacity of 20,000 liters, allocated for the women's hostel, and a 40,000-liter tank designated for the boys' hostel.

IQAC Coordinator



PRINCIPAL
Principal

Sir C R Reddy College of Engineering
ELURU - 534 007

Estd. 1989

SIR C. R. REDDY COLLEGE OF ENGINEERING

ELURU534007, Eluru Dist., A.P., INDIA

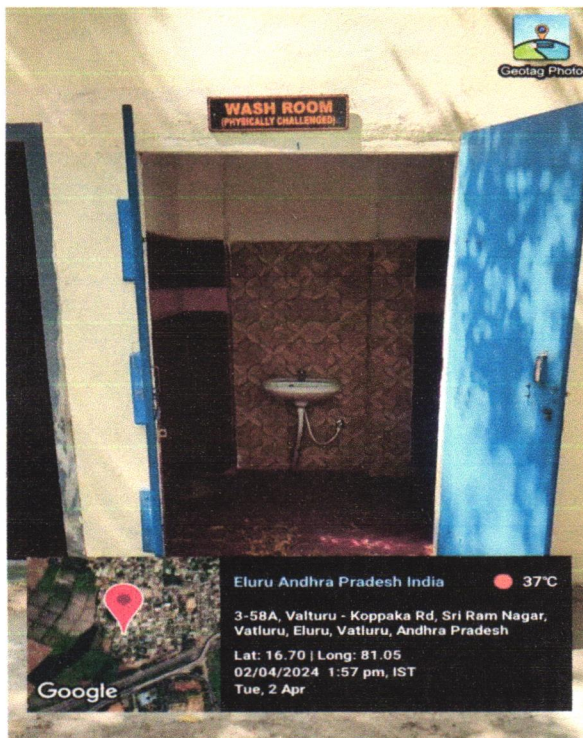
ACCREDITED BY NBA, APPROVED BY ALL INDIA COUNCIL FOR TECHNICAL EDUCATION, NEW DELHI,
PERMANENTLY AFFILIATED TO JNTUK, KAKINADA

www.sircrengg.ac.in



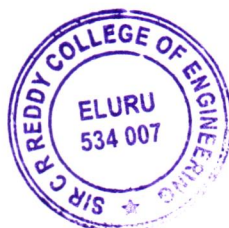
OFF: (08812) 230840, 230565
FAX : (08812) 224193
Email: principal.sircrengg@gmail.com


Washroom Facility for Physically Challenged



The washroom facilities for physically handicapped individuals at Sir C R Reddy College of Engineering are designed to be fully accessible and accommodating. These facilities typically include wider entrance doors to accommodate wheelchairs. Additionally, these washrooms are usually located on the ground floor or easily accessible areas to ensure convenience for individuals with mobility challenges. The college ensures that these facilities comply with relevant accessibility standards and regulations to provide an inclusive environment for all students and staff.


IQAC Coordinator




PRINCIPAL
Principal
Sir C R Reddy College of Engineering
ELURU - 534 007

Estd. 1989

SIR C. R. REDDY COLLEGE OF ENGINEERING

ELURU534007, Eluru Dist., A.P., INDIA

ACCREDITED BY NBA, APPROVED BY ALL INDIA COUNCIL FOR TECHNICAL EDUCATION, NEW DELHI,
PERMANENTLY AFFILIATED TO JNTUK, KAKINADA

www.sircrrengg.ac.in



OFF: (08812) 230840, 230565
FAX : (08812) 224193
Email: principal.sircrrengg@gmail.com

Ramps



Brief Description: At Sir C R Reddy College of Engineering, ramps are provided throughout the campus to ensure accessibility for physically handicapped individuals. These ramps are strategically placed at key entrances, exits, and other important areas to facilitate easy movement for wheelchair users and those with mobility impairments. The ramps are designed with proper inclines and widths according to accessibility standards to ensure safety and convenience.

[Signature]
IQAC Coordinator



[Signature]
PRINCIPAL
Principal
Sir C R Reddy College of Engineering
ELURU - 534 007

Estd. 1989

SIR C. R. REDDY COLLEGE OF ENGINEERING

ELURU534007, Eluru Dist., A.P., INDIA

ACCREDITED BY NBA, APPROVED BY ALL INDIA COUNCIL FOR TECHNICAL EDUCATION, NEW DELHI,
PERMANENTLY AFFILIATED TO JNTUK, KAKINADA

www.sircrrengg.ac.in



FF: (08812) 230840, 230565

AX : (08812) 224193

Wheel Chair



Brief Description:

The wheelchair facilities for physically handicapped individuals at Sir C R Reddy College of Engineering are designed to provide accessibility and convenience. The wheelchair facilities at Sir C R Reddy College of Engineering aim to create an inclusive environment where individuals with disabilities can fully participate in academic and extracurricular activities. These facilities adhere to accessibility standards to ensure equal access and opportunities for all members of the college community.

[Signature]
IQAC Coordinator



[Signature]
PRINCIPAL
Principal
Sir C R Reddy College of Engineering
ELURU - 534 007

Estd. 1989

SIR C. R. REDDY COLLEGE OF ENGINEERING

ELURU534007, Eluru Dist., A.P., INDIA

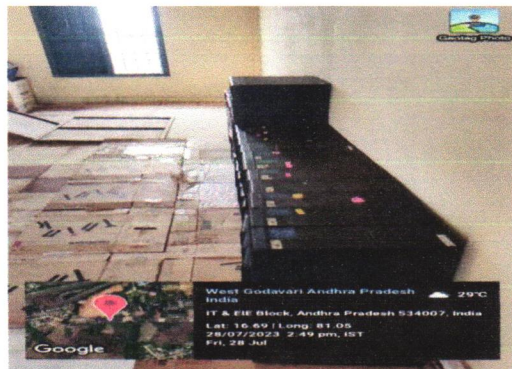
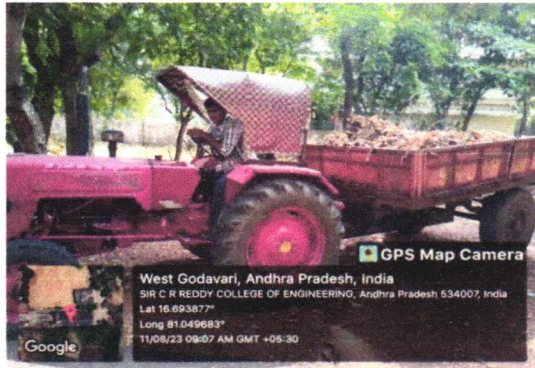
ACCREDITED BY NBA, APPROVED BY ALL INDIA COUNCIL FOR TECHNICAL EDUCATION, NEW DELHI,
PERMANENTLY AFFILIATED TO JNTUK, KAKINADA

www.sircrrengg.ac.in



OFF: (08812) 230840, 230565
FAX : (08812) 224193
Email: principal.sircrrengg@gmail.com


Waste Segregation



The institution has implemented a comprehensive waste management system targeting various types of waste generated on campus. Food waste from hostels and canteens, municipal waste, plastic waste, and electronic waste are all collected separately. Memorandums of Understanding (MOUs) have been established with authorized organizations for proper disposal. Separate collection bins and tubs are strategically placed throughout the campus. Solid waste, including paper, plastic, and metal cans, is sorted into separate bins for decomposable and non-decomposable waste, respectively. Liquid waste from chemical labs undergoes careful disposal processes. Electronic waste undergoes recycling, with minor repairs conducted on-site and major repairs handled by certified specialists to extend equipment lifespan.


IQAC Coordinator




PRINCIPAL
Principal
Sir C R Reddy College of Engineering
ELURU - 534 007

Estd. 1989

SIR C. R. REDDY COLLEGE OF ENGINEERING

ELURU534007, Eluru Dist., A.P., INDIA

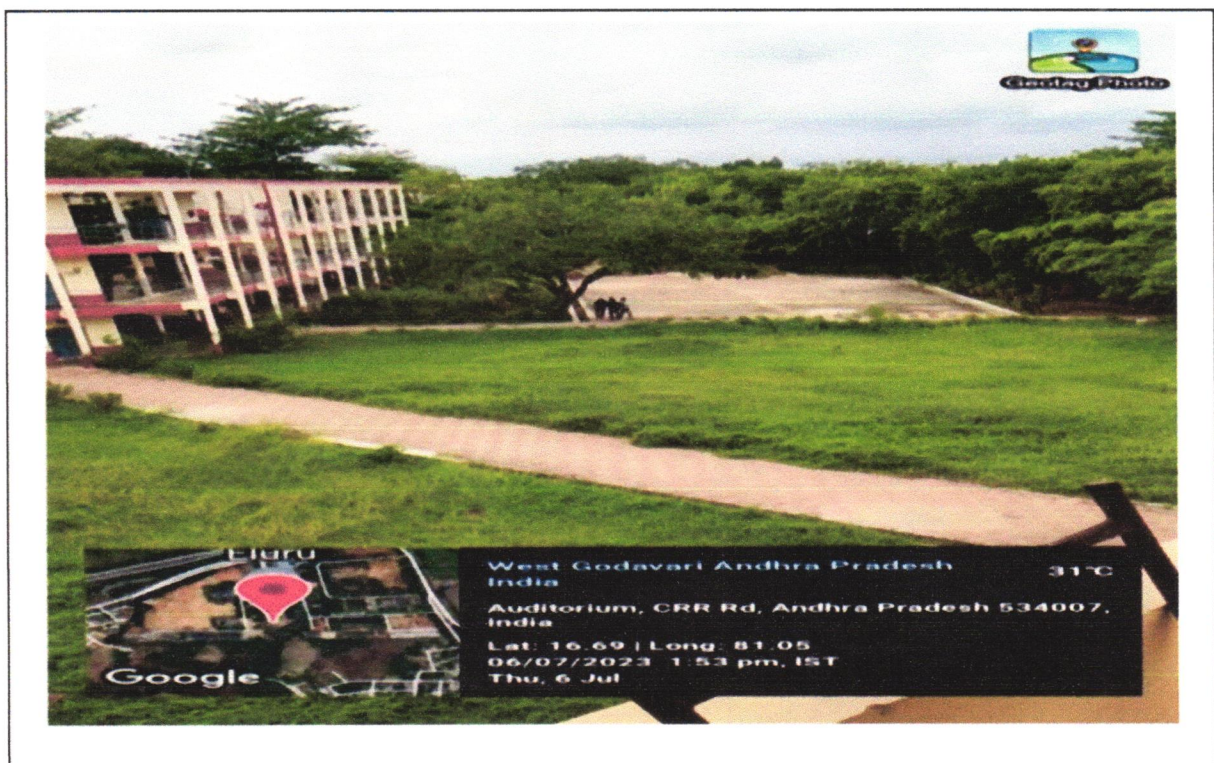
ACCREDITED BY NBA, APPROVED BY ALL INDIA COUNCIL FOR TECHNICAL EDUCATION, NEW DELHI,
PERMANENTLY AFFILIATED TO JNTUK, KAKINADA

www.sircrengg.ac.in



OFF: (08812) 230840, 230565
FAX : (08812) 224193
Email: principal.sircrengg@gmail.com

Pedestrian Paths



Brief Description: Pedestrian paths at Sir C R Reddy College of Engineering are meticulously planned to provide safe and convenient routes for students, faculty, and visitors to navigate the campus. pedestrian paths at Sir C R Reddy College of Engineering are designed to promote a pedestrian-friendly campus environment that prioritizes safety, accessibility, connectivity, and aesthetics. These paths play a vital role in facilitating movement and fostering a sense of community among campus occupants.


IQAC Coordinator




PRINCIPAL
Principal

Sir C R Reddy College of Engineering
ELURU - 534 007

Estd. 1989

SIR C. R. REDDY COLLEGE OF ENGINEERING

ELURU534007, Eluru Dist., A.P., INDIA

ACCREDITED BY NBA, APPROVED BY ALL INDIA COUNCIL FOR TECHNICAL EDUCATION, NEW DELHI,
PERMANENTLY AFFILIATED TO JNTUK, KAKINADA

www.sircrrengg.ac.in



OFF: (08812) 230840, 230565
FAX : (08812) 224193
Email: principal.sircrrengg@gmail.com

No Entry of Automobiles signs



Brief Description: A "no entry of automobiles in the campus" policy restricts the access of vehicles such as cars, motorcycles, or other motorized vehicles within a specified area, typically a campus. This policy is often implemented for various reasons including safety concerns, reducing traffic congestion, promoting a pedestrian-friendly environment, minimizing pollution, and preserving the aesthetics of the campus. Instead, alternative modes of transportation like walking, cycling, or the use of designated shuttles may be encouraged to navigate within the campus premises.

[Signature]
IQAC Coordinator



[Signature]
PRINCIPAL
Principal
Sir C R Reddy College of Engineering
ELURU - 534 007

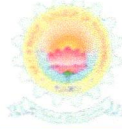
Estd. 1989

SIR C. R. REDDY COLLEGE OF ENGINEERING

ELURU534007, Eluru Dist., A.P., INDIA

ACCREDITED BY NBA, APPROVED BY ALL INDIA COUNCIL FOR TECHNICAL EDUCATION, NEW DELHI,
PERMANENTLY AFFILIATED TO JNTUK, KAKINADA

www.sircrrengg.ac.in



OFF: (08812) 230840, 230565
FAX : (08812) 224193
Email: principal.sircrrengg@gmail.com

Rain Water Harvesting Pits



Brief Description: At Sir C R Reddy College of Engineering, six rainwater harvesting pits are strategically implemented to manage rainwater runoff and promote sustainable water management practices on campus. By implementing rainwater harvesting pits, we demonstrate its commitment to environmental sustainability and water conservation. These pits play a crucial role in reducing reliance on traditional water sources and mitigating the impact of urban development on local hydrology, contributing to a more resilient and eco-friendly campus environment.

V. V. V.
IQAC Coordinator



P. Venkatesh
PRINCIPAL
Principal
Sir C R Reddy College of Engineering
ELURU - 534 007

Estd. 1989

SIR C. R. REDDY COLLEGE OF ENGINEERING

ELURU534007, Eluru Dist., A.P., INDIA

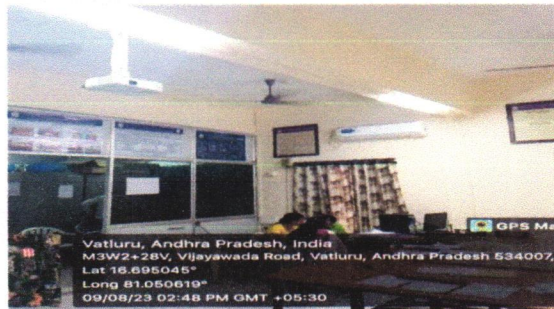
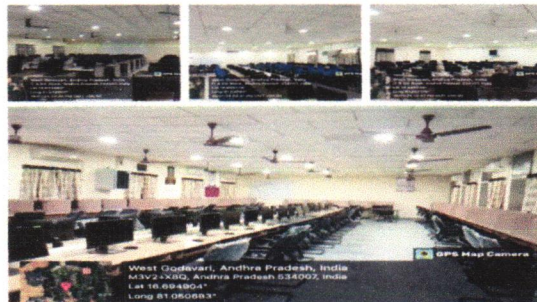
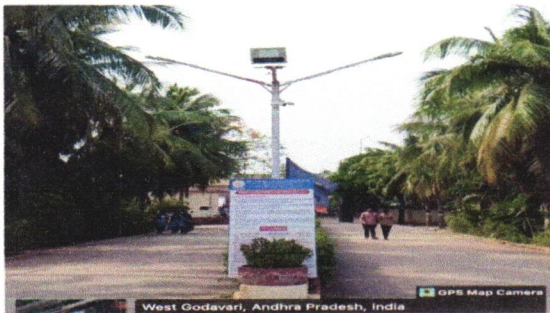
ACCREDITED BY NBA, APPROVED BY ALL INDIA COUNCIL FOR TECHNICAL EDUCATION, NEW DELHI,
PERMANENTLY AFFILIATED TO JNTUK, KAKINADA

www.sircrengg.ac.in



OFF: (08812) 230840, 230565
FAX : (08812) 224193
Email: principal.sircrengg@gmail.com

LED LIGHTING



Energy conservation is one of the most important issues facing society some of the measures commonly used for conservation of energy are utilizing LED lights, switching off the fans and lights when they are not in use, and using alternating energy resources. The institution is also taking several measures to conserve energy .conventional lighting has been replaced by LED lights 50–60% in the campus, in all important areas such as street lighting , seminar halls, auditoriums, department office areas, all computer centres, and classes, and labs. Awareness among the students is also creating by conducting energy conservation programs and providing sign board like “save energy” and “switch of lights and fans while leave the class.


IQAC Coordinator




PRINCIPAL
Principal
Sir C R Reddy College of Engineering
ELURU - 534 007

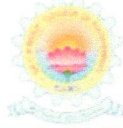
Estd. 1989

SIR C. R. REDDY COLLEGE OF ENGINEERING

ELURU534007, Eluru Dist., A.P., INDIA

ACCREDITED BY NBA, APPROVED BY ALL INDIA COUNCIL FOR TECHNICAL EDUCATION, NEW DELHI,
PERMANENTLY AFFILIATED TO JNTUK, KAKINADA

www.sircrrengg.ac.in

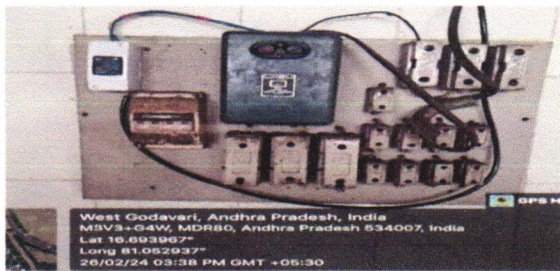
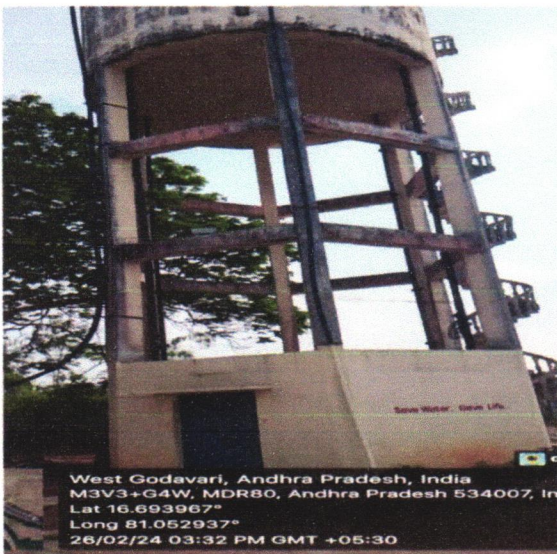


OFF: (08812) 230840, 230565

FAX : (08812) 224193

Email: principal.sircrrengg@gmail.com

WATER TANK WITH SENSOR OPERATED MOTORS




S.No	Location	Capacity liters
1	College main tank	120000
2	Boys hostel	40000
3	Girls hostel	40000(20000*2)

The Sir C.R. Reddy Engineering Campus has excellent water storage facilities. There are three locations on campus equipped with sensor-operated motors to manage water overflow, with a total water storage capacity of 200,000 liters. Adjacent to the IT department, there is a primary tank with a capacity of 1,20,000 liters. Additionally, there are two water tanks, each with a capacity of 20,000 liters, allocated for the women's hostel, and a 40,000-liter tank designated for the boys' hostel.


IQAC Coordinator




PRINCIPAL
Principal
Sir C R Reddy College of Engineering
ELURU - 534 007

Estd. 1989

SIR C. R. REDDY COLLEGE OF ENGINEERING

ELURU534007, Eluru Dist., A.P., INDIA

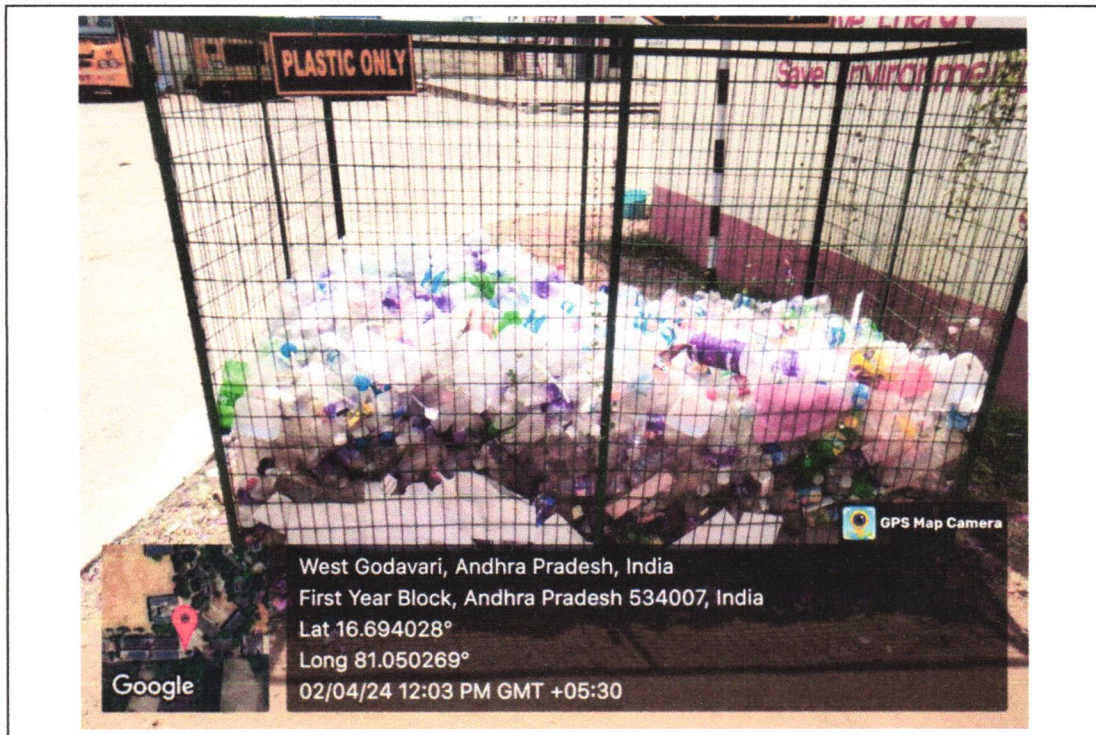
ACCREDITED BY NBA, APPROVED BY ALL INDIA COUNCIL FOR TECHNICAL EDUCATION, NEW DELHI,
PERMANENTLY AFFILIATED TO JNTUK, KAKINADA

www.sircrrengg.ac.in



OFF: (08812) 230840, 230565
FAX : (08812) 224193
Email: principal.sircrrengg@gmail.com


No plastic Signs




















Brief Description: Efficient plastic waste management is essential for promoting environmental sustainability on campus. Initiatives include advocating for reusable alternatives, installing dedicated recycling bins for plastic waste segregation, orchestrating awareness campaigns to educate the campus community about the significance of responsible waste disposal, and forging partnerships with local recycling facilities to streamline plastic waste management processes. To minimize littering, six number of separate collection bins have been strategically placed across the campus.


IQAC Coordinator




PRINCIPAL
Principal
Sir C R Reddy College of Engineering
ELURU - 534 007

Video proofs for facilities

S.No	Name of the facility	Proof
1.	Solar Park	
2.	Lift	
3.	Bore Wells	
4.	Sump	
5.	Water Tank Facility with Sensor Operated Motors	
6.	Washroom Facility For Physically Challenged	
7.	Ramps	
8.	Wheel Chair	
9.	Waste Management	
10.	Pedestrian Paths	
11.	No Entry of Automobiles Signs	
12.	Rain Water Harvesting Pits	
13.	Led Lighting	
14.	Plastic waste management	
15.	Dispensary	
16.	Tree shade parking	
17.	Fire safety measures	
18.	Green campus	